

# Monsoon study in the Philippines

## Purpose

To understand the seasonal march of summer and winter monsoon and those predictability

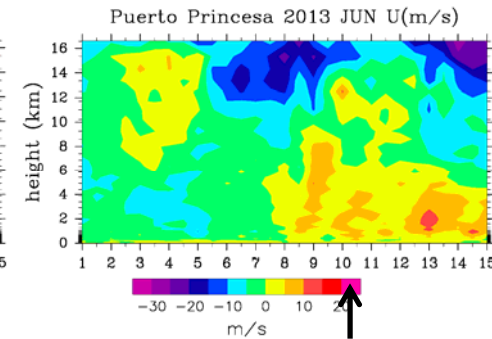
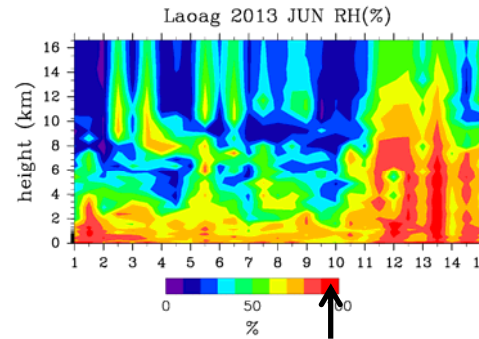
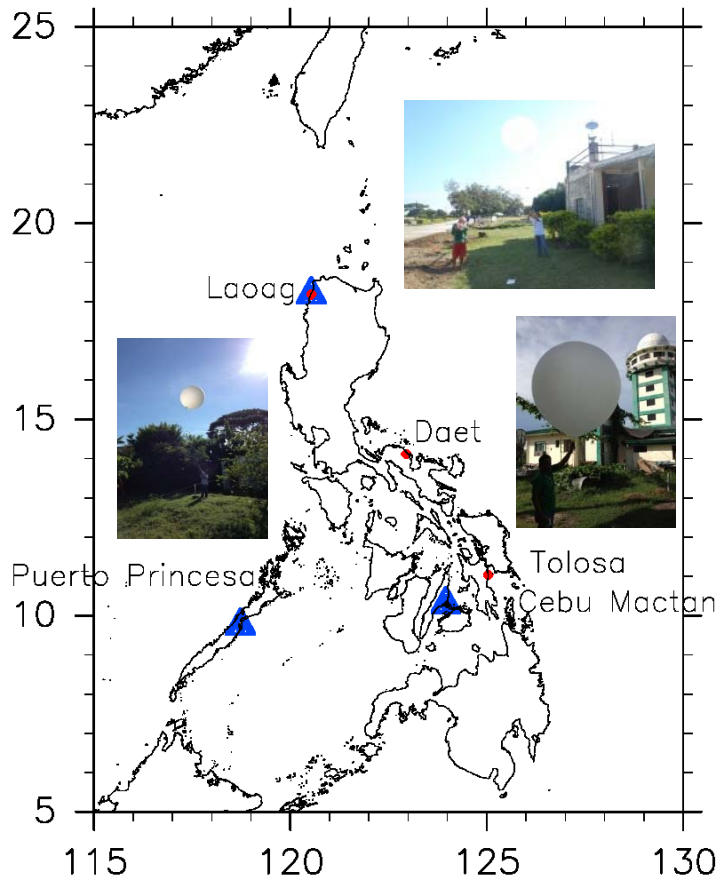
## Observational studies

Surface observation Daet (2005- ), Laoag (2006- ), Tolosa (2014- )

VPREX (Vietnam Philippine Rainfall Experiment) 2010 at Cebu (Sep. 2010-Jan. 2011)

VPREX2012 at Puerto Princesa (Dec. 2012)

PALAU2013 at Cebu, Laoag, and Puerto Princesa (May-Aug. 2013)



Monsoon onset structure in PALAU2013

